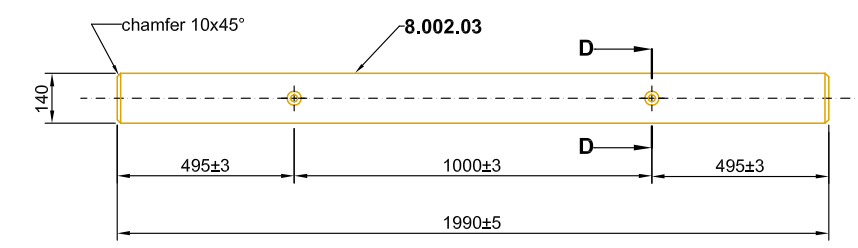
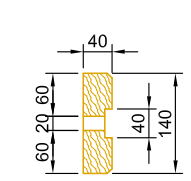


*) In these measurements the bandwidth tolerance is recorded. Tolerances of the non-deformed bands according to DIN EN 10051 refer to a nominal width of 435mm and a nominal thickness of 2.5mm ± 0.17

D-D (2:1)



Remark: wood measurements can vary slightly due to its material attitudes, without affecting the performance

Part No.	Qty.	Description	Dimension	Single-weight	Overall weight	Material / Quality	Norm	Drawing
8.001.01	12	Passion beam, profile B	Bl. 310x2.5x4300	38.00	456.00	S355JR	EN 10025 / EN 1461	
8.002.02	48	Passion ELLA, post C100/60/25/4	Bl. 238x4x1650	13.00	624.00	S355JR	EN 10025 / EN 1461	
8.002.03	48	Wood beam cover	1990x140	6.00	288.00	lamellar wood		
10.10	48	Butt plate M10	Fl. 40x5x115	0.20	9.60	S235JR	EN 10025 / EN 1461	
40.00	72	HRK-bolt with nib, with nut	M16x27	0.10	7.20	4.6	ISO 4032	
40.42	48	Hex bolt, with nut	M10x45	0.05	2.40	4.6	ISO 4032	
8.001.05	96	HRK-bolt with nib, with nut	M16x60	0.15	14.40	4.6	ISO 4032	
40.30	72	Washer 18 mm	30x3	0.04	2.88	DIN126		
40.32	96	Washer 50x18 mm	50x4	0.06	5.76	DIN126		
40.60	48	Washer 11 mm	20x2	0.00	0.00	DIN126		

PASS+CO®

Weight of the construction: - Weight/Running metter: 29.38 kg Test lenght: 48 m

Title, Additional title:
PASSion L1 ELLA H1-A-W2 (ES 1.00)

Part number: -	Material: S355JR;S235JR;4.6;wood	Surface: steel; wood cover
Document number: X8.2-100-200	Form.: A3	Scale: 1:20(1:10) (1:5)
Date of issue: 2022-02	Created by: W. Babiarz	