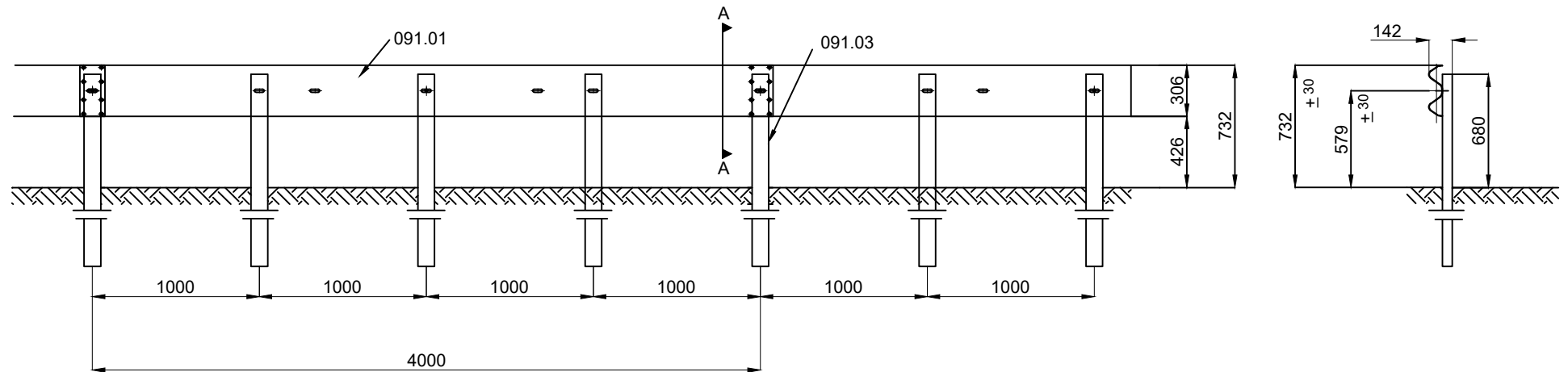


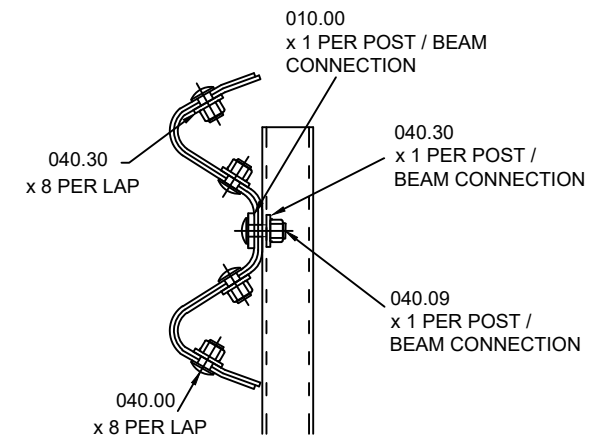
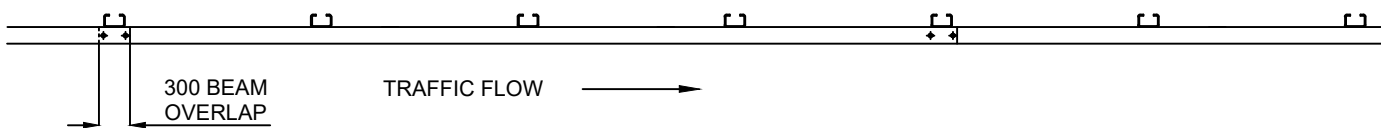
PASSCO L1 SYSTEM COMPONENT REGISTER		
ITEM No	ITEM DESCRIPTION	DRAWING REFERENCE
091.01	PASSCO L1 A - PROFILE BEAM	L1UK / PCSF / 01
091.03D	PASSCO L1 C SECTION POST - DRIVEN POST OPTION	L1UK / PCSF / 02
091.03C	PASSCO L1 C SECTION POST - CONCRETED POST OPTION	L1UK / PCSF / 03
091.03SM	PASSCO L1 C SECTION POST - SURFACE MOUNTED POST OPTION	L1UK / PCSF / 04
010.00	WASHER PLATE 40 x 115 x 6 FOR M16	L1UK / PCSF / 05
040.00	M16 x 27 SETSCREW WITH LIP GRADE 4.6 C/W NUT	L1UK / PCSF / 05
040.09	M16 x 45 SETSCREW WITH LIP GRADE 8.8 C/W NUT	L1UK / PCSF / 05
040.30	M16 WASHER Ø18 HOLE	L1UK / PCSF / 05


NOTES

- Barrier set back should be determined in accordance with TD27/05 and the contract specification. In instances where the set back is less than 1500mm, the system height should be measured from the edge of the paved area (Hard-Shoulder or Running Lane) where the set back is greater than 1500mm, the system height should be measured from the local/adjacent ground level as per standard NPSBS systems.
- Posts are to be installed with the closed face of the channel against the beam.
- When tying into adjacent VRS, only one working width difference is permitted.
- For minimum length of Full Height VRS, refer to Pass & Co UK manual section 2.6.



**SECTION A-A
BEAM LAP AND POST TO BEAM
CONNECTION DETAILS**



PASS+CO UK LTD. UNIT 2, FLIXBOROUGH INDUSTRIAL ESTATE, FLIXBOROUGH, NORTH LINCOLNSHIRE, DN20 8SE 	TITLE PASSCO L1 UK (ES 1.0) N2/W1 GENERAL ARRANGEMENT DRAWING	DRAWING No L1UK / PCGA / 01	
		DIMENSIONS IN MM	DRAWN BY AB
	DRAWINGS ARE PROPERTY OF PASS+CO UK LTD, AND MAY NOT BE COPIED OR PASSED ONTO THIRD PARTIES WITHOUT PRIOR APPROVAL.	REVISION 0 - APRIL 2017	CHECKED BY. PB