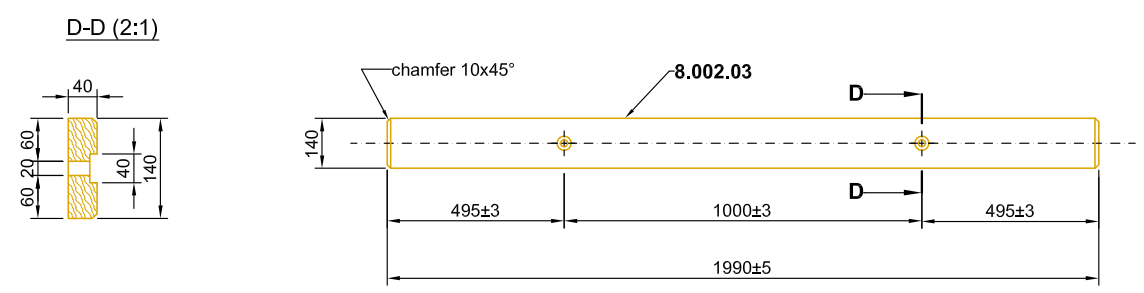


*) In these measurements the bandwidth tolerance is recorded. Tolerances of the non-deformed bands according to DIN EN 10051 refer to a nominal width of 435mm and a nominal thickness of 2.5mm ± 0.17



Remark: wood measurements can vary slightly due to its material attitudes, without affecting the performance

| Part No. | Qty. | Description | Dimension | Single-weight | Overall weight | Material / Quality | Norm | Drawing |
|----------|------|--|------------------|---------------|----------------|--------------------|--------------------|---------|
| 8.001.01 | 12 | Passion beam, profile B | Bl. 310x2.5x4300 | 38.00 | 456.00 | S355JR | EN 10025 / EN 1461 | |
| 8.002.06 | 36 | Passion ELLA post on footplate, C100/60/25/4 | Bl. 238x4x667 | 10.75 | 387.00 | S355JR | EN 10025 / EN 1461 | |
| 8.002.03 | 48 | Wood beam cover | 1990x140 | 6.00 | 288.00 | lamellar wood | | |
| 10.10 | 36 | Butt plate M10 | Fl. 40x5x115 | 0.20 | 7.20 | S235JR | EN 10025 / EN 1461 | |
| 40.00 | 72 | HRK-bolt with nib, with nut | M16x27 | 0.10 | 7.20 | 4.6 | ISO 4032 | |
| 40.42 | 36 | Hex bolt, with nut | M10x45 | 0.05 | 1.80 | 4.6 | ISO 4032 | |
| 8.001.05 | 72 | HRK-bolt with nib, with nut | M16x60 | 0.15 | 14.40 | 4.6 | ISO 4032 | |
| 40.30 | 72 | Washer 18 mm | 30x3 | 0.04 | 2.88 | DIN126 | | |
| 40.32 | 72 | Washer 50x18 mm | 50x4 | 0.06 | 5.76 | DIN126 | | |
| 40.60 | 48 | Washer 11 mm | 20x2 | 0.00 | 0.00 | DIN126 | | |
| 100.01 | 144 | Chemical anchor with stud bolt and 2 nuts for L1 | M16x195 | 0.40 | 57.60 | 8.8 | | |

PASS+CO®

Weight of the construction: - Weight/Running meter: 25.58 kg Test length: 48 m

Title, Additional title:
PASSion L1 ELLA H1-A-W4 (BW-ES 1.33)

| | | |
|----------------------------------|-------------------------------------|-------------------------------|
| Part number: - | Material: S355JR;S235JR;4.6;wood | Surface: steel; wood cover |
| Document number: X8.2-100-800 | Form.: A3 | Scale: 1:20(1:10) (1:5) |
| | Date of issue: 2022-02 | Created by: W. Babiarz |