

Part No	Qty.	Description	Weight [kg]	Material / Class	Norm	Drawing No
1	1	Beam 3N Wave, L=4310, #3,00mm	75,11	S355JR	EN 10025 / EN 1461	
2	2	Post C125x62,5x25, L=1195mm, #6,00mm, with base plate 350x300x15 and base reinforcements	33,22	S355JR	EN 10025 / EN 1461	
3	1	Upper rail U 140x130, L=3998mm, #4,00mm	48,21	S355JR	EN 10025 / EN 1461	
4	2	Spacer 360x300x6	3,15	S235JR	EN 10025 / EN 1461	
5	2	Spacer reinforcement	1,27	S235JR	EN 10025 / EN 1461	
6	1	Upper rail connection U128x120x4, L=450mm	4,96	S355JR	EN 10025 / EN 1461	
7	2	U connection 125x60x4, H=125mm	0,89	S355JR	EN 10025 / EN 1461	
8	3	Upper rail reinforcement U125x125x4, L=65mm	0,77	S355JR	EN 10025 / EN 1461	
9	2	3N Wave reinforcement 300x50x4	0,47	S355JR	EN 10025 / EN 1461	
10	4	Cover plate for bolt 100x40x5	0,16	S235JR	EN 10025 / EN 1461	
11	10	Bolt M16x45, class 8.8, Round head oval neck bolt with nut M16 and washer M16	0,1746	Class 8.8	ISO 4032, ISO 7089	
12	8	Stud bolt M20x250, class 8.8 with nt M20 and washer M20 (22x60x4)	0,60324	Class 8.8	ISO 4032, ISO 7089	
13	12	Bolt M16x35, class 8.8, Round head oval neck bolt with nut M16 and washer Ø40x18x4	0,1653	8.8	ISO 4032, ISO 7089	
14	4	Bolt M20x40, class 8.8, with nut M20 and washer M20	0,2334	8.8	ISO 4032, ISO 7089	
15	38	Bolt M16x30, class 8.8, with nut M16 and washer M16	0,1243	8.8	ISO 4032, ISO 7089	

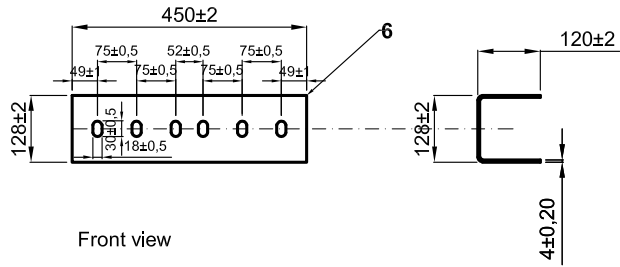
PASS+CO®

Weight of the construction: - Weight/Running meter: - Test length: 64 m

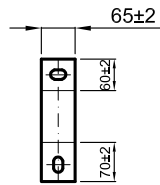
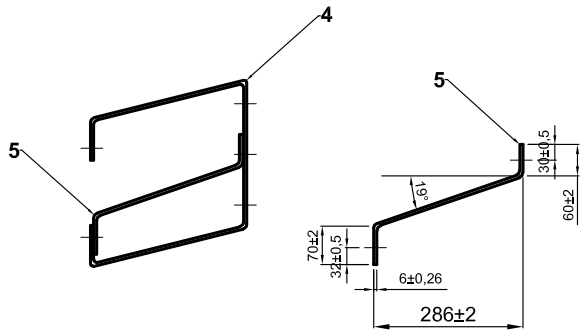
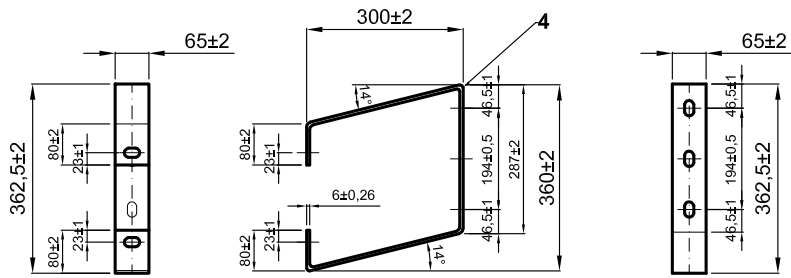
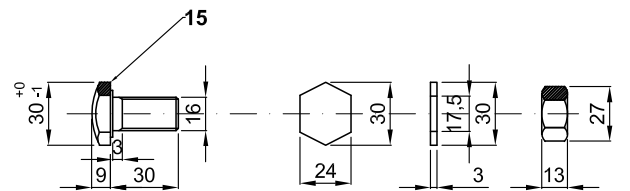
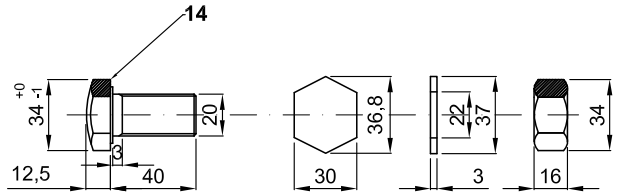
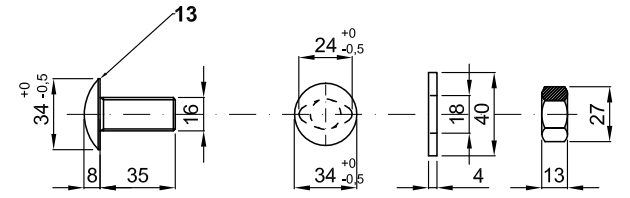
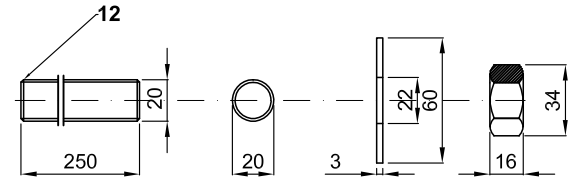
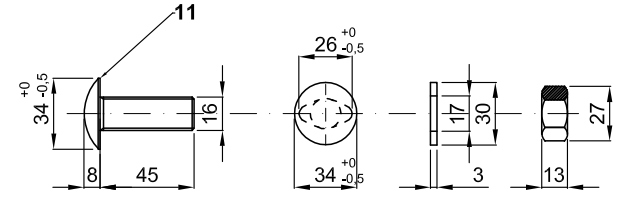
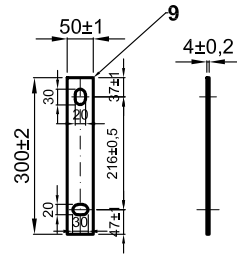
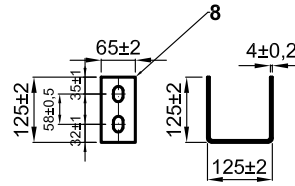
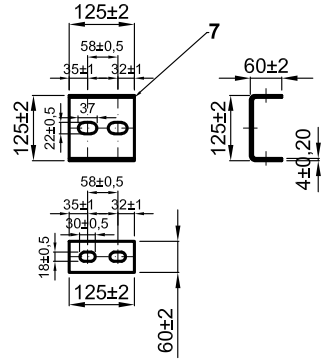
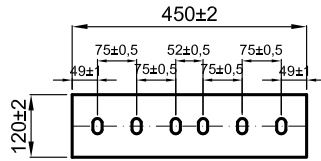
Title, Additional title:
passco 3N H4b-A-W5 (BW-ES 2.00)


Part number:	Material: S355JR, S235JR; 8.8
Document number: [sheet 1]	Form.: A3
	Scale: 1:20(1:10) (1:5)
	Date: 2023-03
	Created by: WB

Top view



Front view



	Description:	passco 3N H4b-A-W5 (BW-ES 2.00)	
	PARTS:	4 - 16	
	Part number:	
	Drawing number: [sheet 2]	
	Material:	S355JR, S235JR; 8,8	
	Date of Issue:	2023-03	Created by: WB