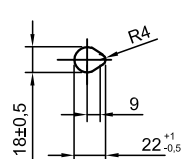
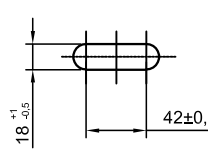


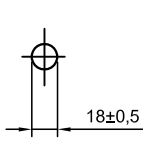
Detail X



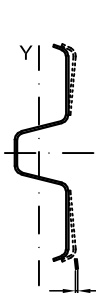
Detail Y



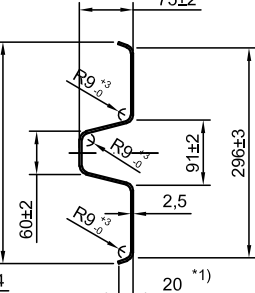
Detail Z



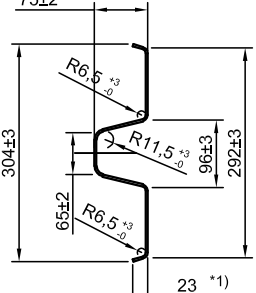
Deflection Y-axis ±5



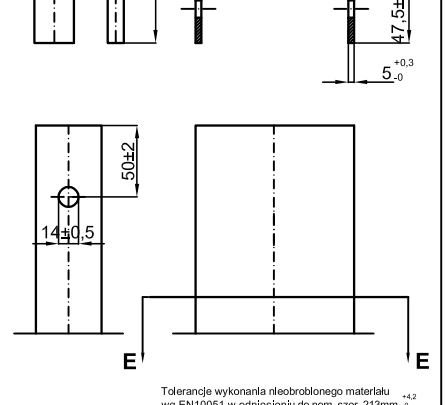
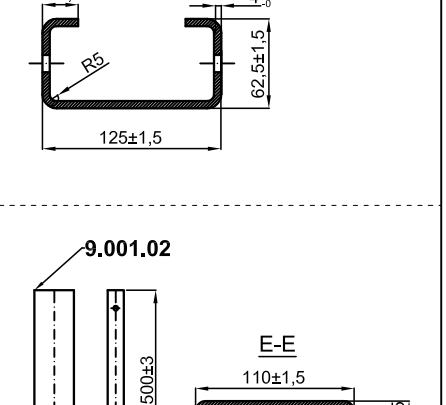
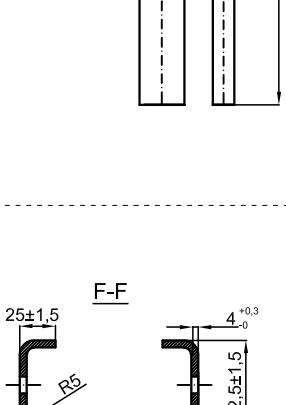
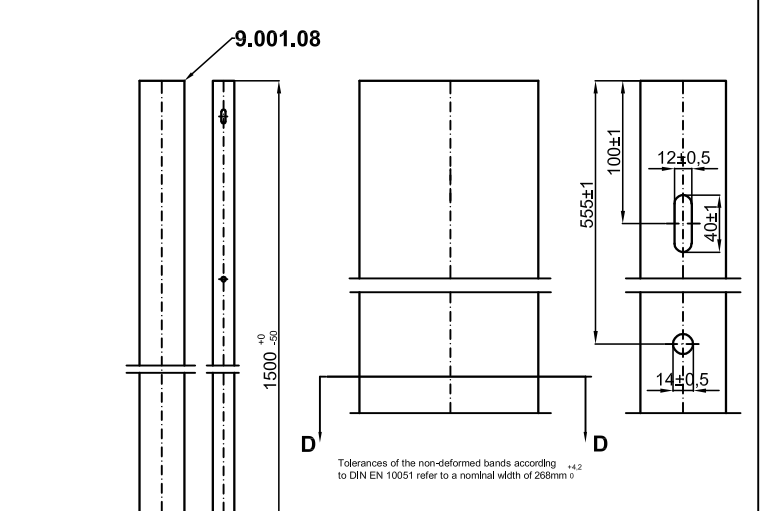
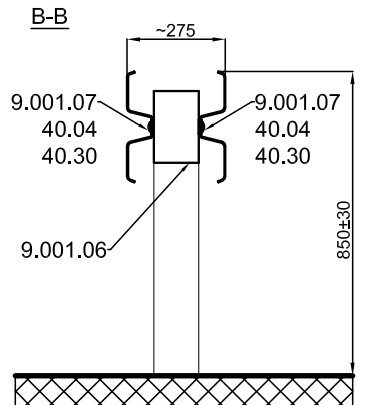
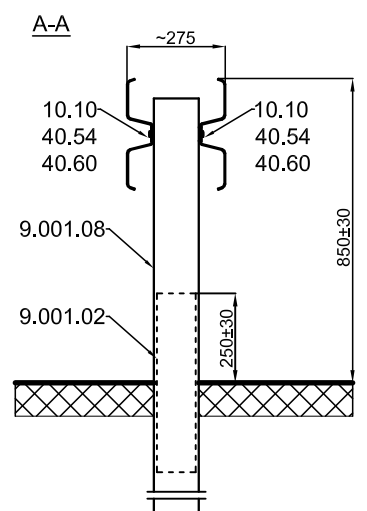
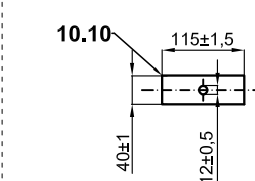
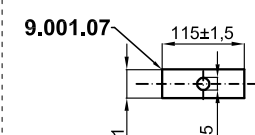
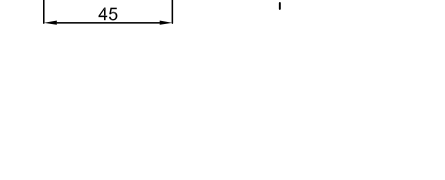
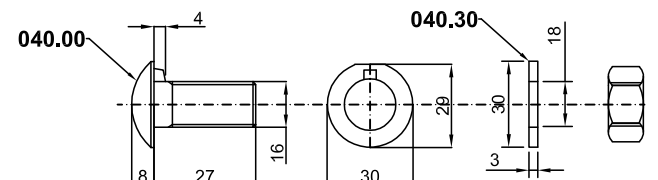
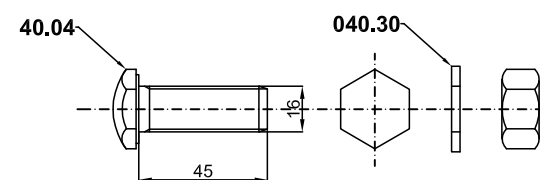
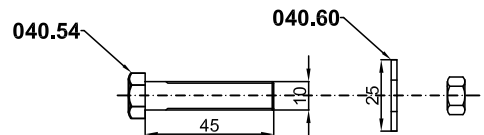
A-A



B-B



*1) In these measurements the bandwidth tolerance is recorded, Tolerances of the non-deformed bands according to EN 10051 refer to a nominal width of 435mm and a nominal thickness of 2,5mm



Part No.	Qty.	Description	Dimension	Single-weight	Overall weight	Material / Quality	Norm	Drawing
1,1	20	Passco Beam profile B	310x2,5x4300	37,50	750,00	S355JR	EN 10025 / EN 1461	
9.001.08	15	Passco NEO DS Post C125	C125x62,5x25x4x1500	12,68	190,20	S355JR	EN 10025 / EN 1461	
9.001.02	15	Passco NEO reinforcement Post U110	U110x47,5x5x500	3,75	56,25	S355JR	EN 10025 / EN 1461	
9.001.06	15	Passco NEO DS reinforcement spacer	C125x62,5x4x200	1,70	25,50	S355JR	EN 10025 / EN 1461	
9.001.07	30	Passco NEO DS deck plate M16	115x40x5	0,20	6,00	S235JR	EN 10025 / EN 1461	
10.10	30	Deck plate M10	115x40x5	0,20	6,00	S235JR	EN 10025 / EN 1461	
40.54	30	Hexagon bolt, with nut	M10x45	0,04	1,20	8.8	ISO 4032	
40.04	30	Hexagon bolt with nose, with nut	M16x45	0,16	4,80	8.8	ISO 4032	
40.00	120	HRK-bolt with nose, with nut	M16x27	0,08	9,60	4.6	ISO 4032	
40.60	30	Washer 12 mm	U12	0,01	0,30	S235JR	ISO 7091	
40.30	150	Washer 18 mm	U18	0,01	1,50	S235JR	ISO 7091	

PASS+CO®

Weight of the construction: 1051,35 kg Weight/Running meter: 26,28 kg/m Test lenght: 40 m

Title, Additional title:
passco NEO H2-A-W5 (DS 2,66)

Part number: DS 2,66	Material: S355JR;S235JR;4.6;8.8	Surface: galvanized
Document number: 9.1-11-100	Form.: A3	Scale: 1:20(1:10) (1:5)
Date of issue: 2025-02-21	Created by: WB	