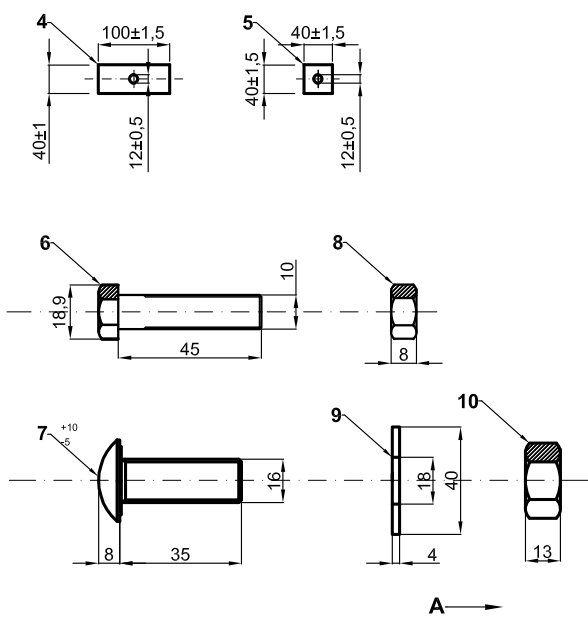
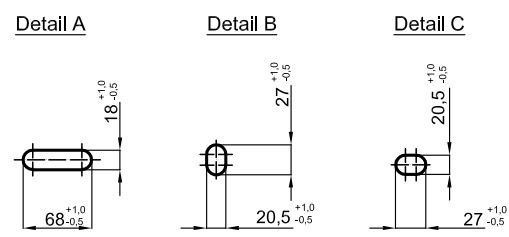
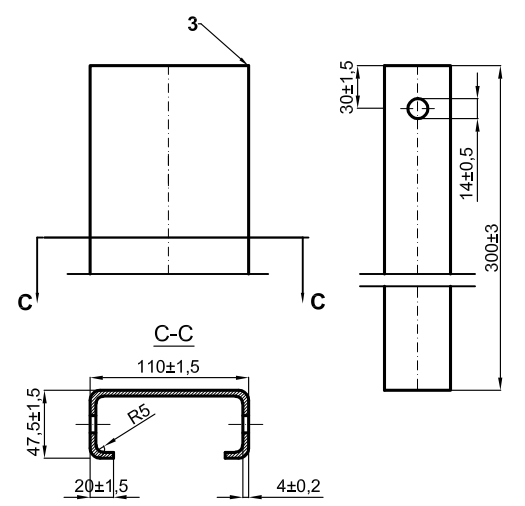
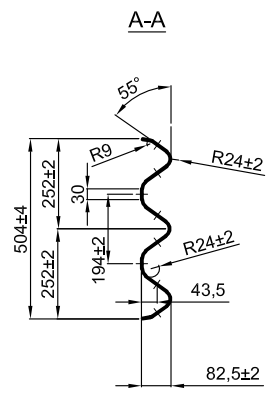
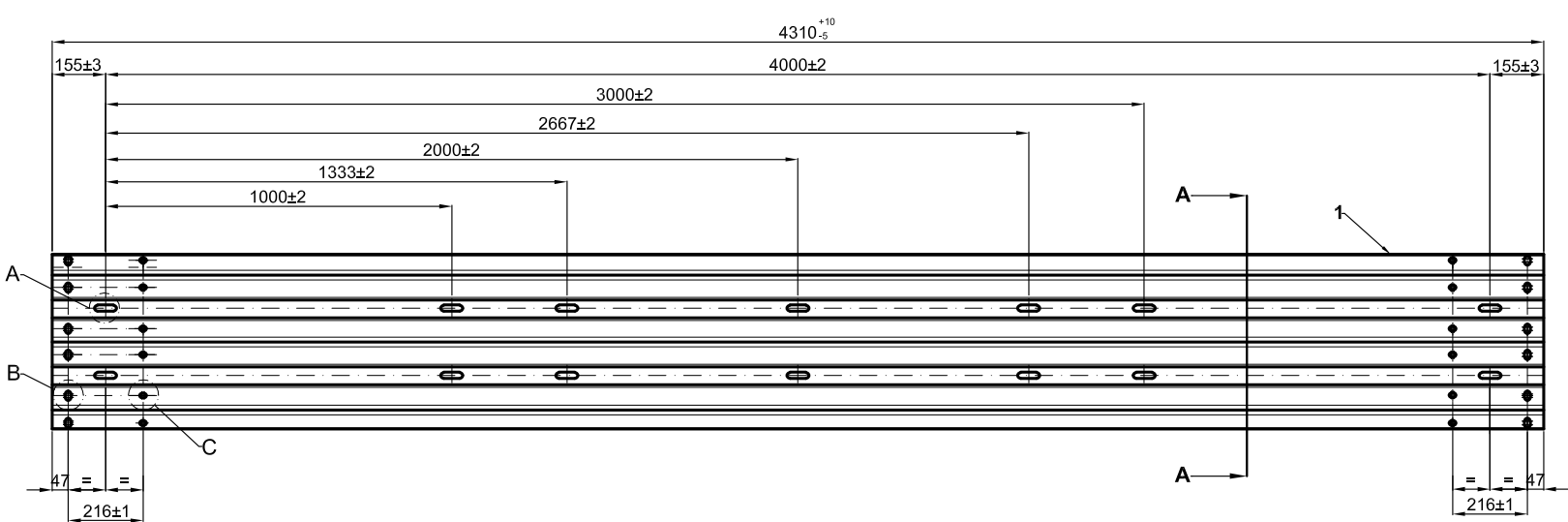


TABLE 1

Post type	L [mm]	Weight [kg/pc.]
A	1630	13,77
B	1900	16,06
C	2100	17,75
D	2300	19,44
F	2500	21,13



Part No.	Qty.	Description	Dimension	Single-weight	Overall weight	Material / Quality	Norm	Drawing
1	10	Beam type 3N, L=4310	740x2,5x4310			S355JR	EN 10025 / EN 1461	
2	20	Post C125x62,5x25 (length acc.to table 1)	268x4xL			S355JR	EN 10025 / EN 1461	
3	20	Reinforcement Post C110x47,5x20, L=300	218x4x300			S355JR	EN 10025 / EN 1461	
4	40	Fishplate 100x40x5	100x5x40			S235JR	EN 10025 / EN 1461	
5	40	Fishplate 40x40x4	40x40x4			S235JR	EN 10025 / EN 1461	
6	40	Bolt M10x45 8.8	M10x45			8.8	ISO 4017	
7	120	HRK-bolt with nose, M16x35 8.8	M16x35			8.8		
8	40	Nut M10	M10				ISO 4032	
9	120	Washer 18 mm	40x4					
10	120	Nut M16	M16				ISO 4032	

PASS+CO®

Weight of the construction: Weight/Running meter: Test length:

Title, Additional title
passco 3N (2,00)

Part number	Material S355JR;S235JR;8.8	Surface galvanized
Document number	Form. A3	Scale 1:20(1:10) (1:5)
	Date of issue 2025-02	Created by WB