



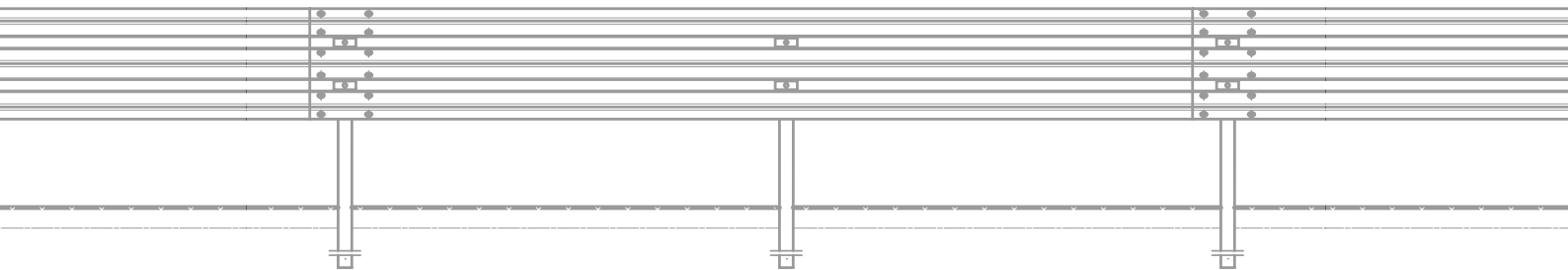
passco 3N H2-A-W4 (ES 2.00)



passco 3N H2-A-W4 (ES 2.66)



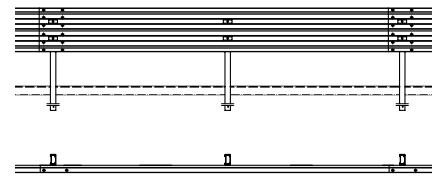
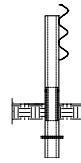
passco 3N H2-A-W4 (BW-ES 2.00)



passco 3N

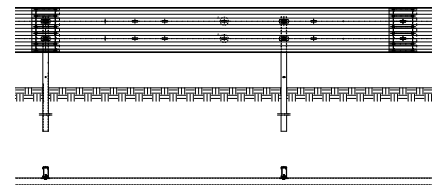
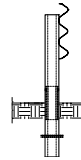
passco 3N H2-A-W4 (ES 2.00)

Aufhaltestufe / Containment Level	H2
Anprallheftigkeitsstufe / Impact Severity Level	A
Wirkungsbereichsklasse / Working Width	W4 = 1,20 m
Fahrzeugeindringung / Vehicle Intrusion	VI5 = 1,70 m
Gewicht Profil „A“ / Weight	24,3 kg/m



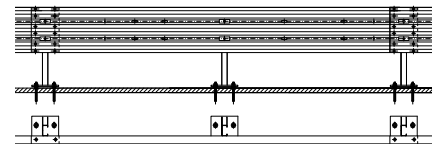
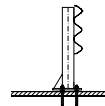
passco 3N H2-A-W4 (ES 2.66)

Aufhaltestufe / Containment Level	H2
Anprallheftigkeitsstufe / Impact Severity Level	A
Wirkungsbereichsklasse / Working Width	W4 = 1,30 m
Fahrzeugeindringung / Vehicle Intrusion	VI5 = 1,70 m
Gewicht Profil „A“ / Weight	22,2 kg/m



passco 3N H2-A-W4 (BW-ES 2.00)

Aufhaltestufe / Containment Level	H2
Anprallheftigkeitsstufe / Impact Severity Level	A
Wirkungsbereichsklasse / Working Width	W4 = 1,30 m
Fahrzeugeindringung / Vehicle Intrusion	VI5 = 1,70 m
Gewicht Profil „A“ / Weight	26,0 kg/m



PASS+CO[®]

www.passco.international
info@passco.international
#passcoworld

CE
1020